

Growing Likeness|2024

Growing Likeness showcases the creative works of
Dr **Eleanor GATES-STUART**

Growing Likeness, a study in biological authored portraiture and a bioart experiment, challenging the growth of human-like structures. A mapping of intelligence systems disguised as human, this research strikes a visual analogy to the science and matrix of crop roots.

Officially opened by Associate Professor
Oron CATTS at 6:15pm

Gallery25

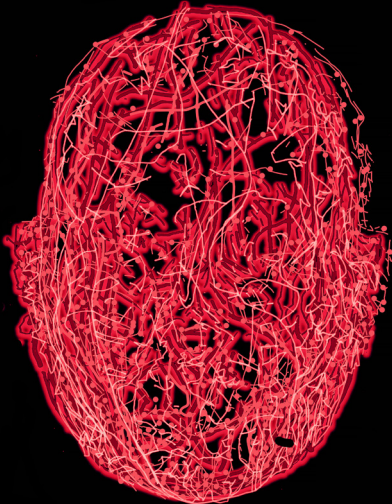
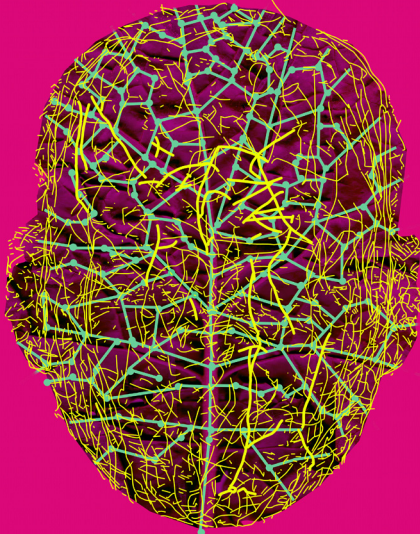
Opening: Thursday 17 October 5pm–7pm

Exhibition dates: 18 October to 13 November

Floor talk: Wednesday 23 October 12:30pm–1:30pm

Gallery opening hours: Tuesday to Friday 10am–4pm

Building 10, 2 Bradford St, Mount Lawley



ECU Galleries

