



PLaN

Partners in Literacy
and Numeracy

School of
Education



For Pre-Service Teachers



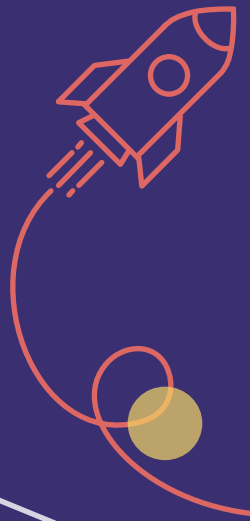
A Rewarding Service
Learning Initiative



“ To experience classrooms from the perspective of a teacher and interacting with students has been amazing. I have a much deeper understanding of what is going to be required of me as well as what I will be experiencing once I am a teacher myself”.

**Tyron, Bachelor of Education
(Secondary)**

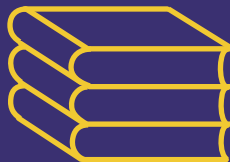




PLaN

A service-learning approach to literacy and numeracy improvement in schools.

To better prepare new teachers with the practical skills needed for strong beginnings in the classroom!





What is PLaN?



PLaN is a School of Education initiative and service-learning program that allows Pre-Service Teachers (PLaN members) to engage with local schools and early learning centres to support the delivery of literacy and numeracy programs in the classroom.

Service learning is a pedagogical approach that combines learning with community service to meet a societal need. PLaN is not a work integrated learning experience, nor paid work, nor a volunteer role.

The PLaN program facilitates beneficial opportunities for both PLaN members and participating schools and centres. For Pre-Service Teachers it allows them to gain extra classroom experiences and practice their teaching skills, helping to enrich their professional understanding and practice of the Australian Professional Standards for Teachers (Graduate Teacher Level). For schools and centres the PLaN members provide additional classroom support in the delivery of literacy and numeracy programs to positively impact their students' learning.

PLaN Partners

“This is such a great program...
I really do think it has helped me improve my
small group work, planning and teaching”

**Isabelle, Bachelor of
Education (Primary)**

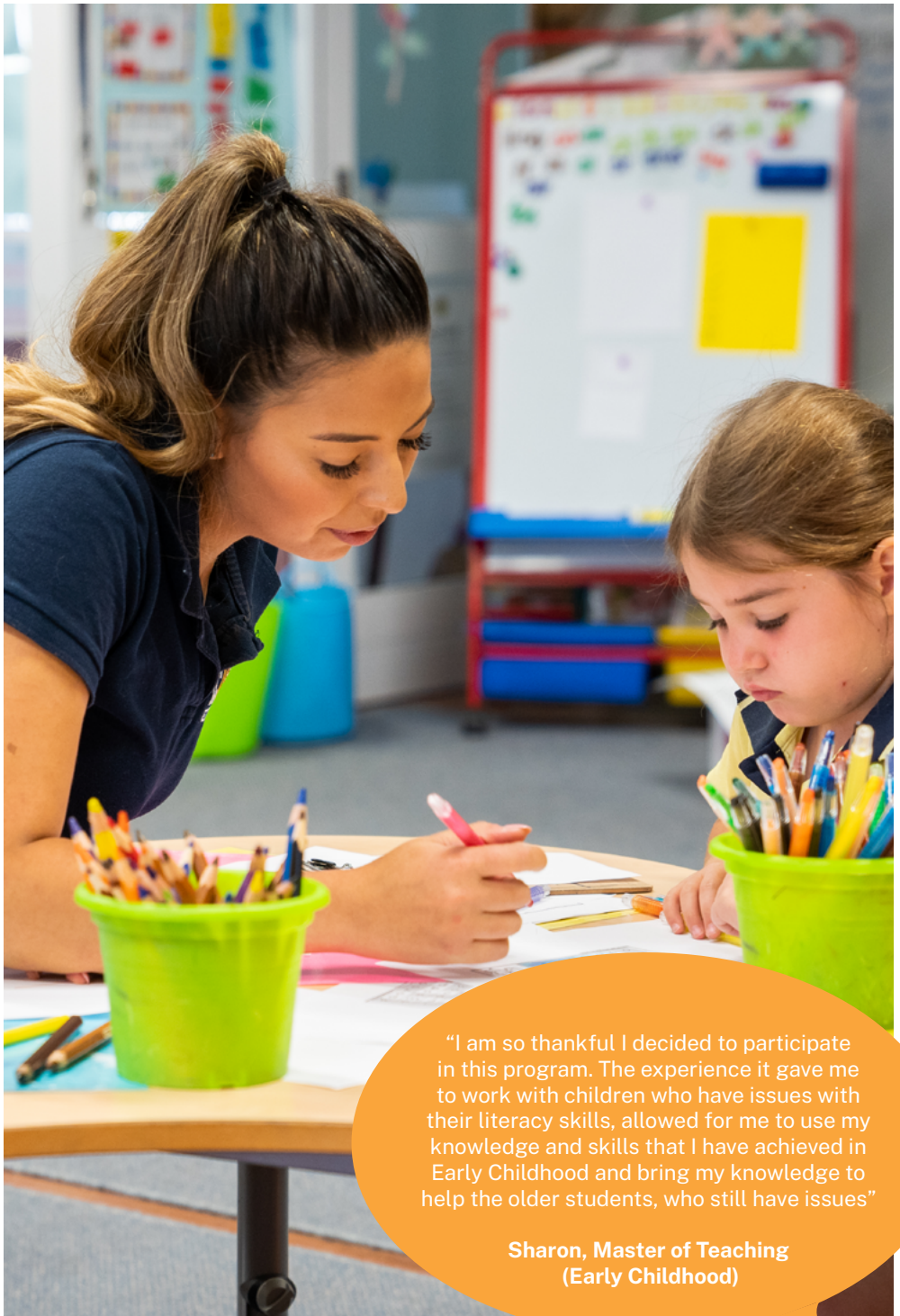
We would like to thank and acknowledge our current PLaN Partner schools and centres for supporting this program and the ECU Pre-Service Teachers who have given their service so far.

PLaN Partner Primary Schools/Centres	PLaN Partner Secondary Schools
Adam Road Primary School	Ashdale Secondary College
Ashburton Drive Primary School	Australind Senior High School
Ashdale Primary School	Balcatta Senior High School
Atlantis Child Care Ocean Keys	Baldivis Secondary College
Australind Primary School	Ballajura Community College
Banksia Grove Primary School	Busselton Senior High School
Bayswater Primary School	Butler College
Bruce Rock District High School (Yr1-6)	Bruce Rock District High School
Cooinda Primary School	Cecil Andrews College
Carramar Primary School	Clarkson Community High School
Clarkson Primary School	Comet Bay College
Dalyellup Primary School	Dalyellup College
Dianella Primary College	Dianella Secondary College
Doubleview Primary College	Ellenbrook Secondary College
East Butler Primary School	Girrawheen Senior High School
East Manjimup Primary School	Governor Stirling Senior High School
Ellenbrook Primary School	Indie School, Midland
Hollywood Primary School	Joseph Banks Secondary College
Inglewood Primary School	Kinross College
Joondalup Primary School	Melville Senior High School
Madeley Primary School	Morawa District High School
Midvale Primary School	Mount Lawley Senior High School
Mosman Park Primary School	Ocean Reef Senior High School
North Dandalup Primary School	Swan View Senior High School
Roseworth Primary School	
Seaforth Primary School	
Shorehaven Primary School	
Wattle Grove Primary School	
West Busselton Primary School	
West Northam Primary School	
Yanchep Beach Primary School	

“It was a valuable
experience as part of my
teaching degree”

**Madeleine, Bachelor of
Education (Secondary)**





“I am so thankful I decided to participate in this program. The experience it gave me to work with children who have issues with their literacy skills, allowed for me to use my knowledge and skills that I have achieved in Early Childhood and bring my knowledge to help the older students, who still have issues”

**Sharon, Master of Teaching
(Early Childhood)**

Information for PLaN members

What are the benefits of participating in PLaN?

- Opportunities to positively impact students' literacy and numeracy needs.
- Extra experiences within a classroom environment without any assessment requirements.
- More exposure to school based literacy and numeracy strategies and activities – useful for your teaching portfolio.
- Classroom involvement that strengthens your professional understanding and practice of the Australian Professional Standards for Teachers (Graduate Teacher).
- Classroom involvement that strengthens your communication skills with students.
- Networking for future employment.

Will there be PLaN professional learning opportunities?

Yes. The ECU School of Education will offer networking and professional development opportunities throughout the year for PLaN members.

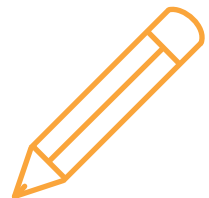
Will I get recognition for my PLaN service?

Yes. An ECU Certificate of Service will be offered for each term that you participate as a PLaN member. These certificates will recognise the number of PLaN service hours you have offered. You can combine all of your PLaN service into one certificate at the end of the year if you wish.

Can I use PLaN for my teaching portfolio?

Yes. Participating in PLaN is a terrific opportunity for you to collect additional evidence of the following Australian Professional Standards for Teachers (Graduate Teacher);

- 1.2 Understand how students learn;
- 1.3 Students with diverse linguistic, cultural, religious and socio-economic backgrounds;
- 1.5 Differentiate teaching to meet the specific learning needs of students across the full range of abilities;
- 2.1 Content and teaching strategies of the teaching area;
- 2.2 Content selection and organisation;
- 2.5 Literacy and numeracy strategies;
- 3.2 Plan, structure and sequence learning programs;
- 3.3 Use teaching strategies;
- 3.4 Select and use resources;
- 3.5 Use effective classroom communication; and
- 6.2 Engage in professional learning and improve practice.



PLaN Member Requirements

“The programs provide a very valuable opportunity for me to gain exposure to teaching in junior primary, which effectively equipped me to be a more competent teacher for my uni placement”

Shea, Master of Teaching (Primary)

What should be discussed at my initial meeting with the PLaN School Coordinator?

- Negotiate the day(s) and time the PLaN member will provide their service;
- Introductions between the classroom teacher and the PLaN member;
- A debrief about the learning needs of the students that the PLaN member may be working with if possible;
- The PLaN member can complete school inductions or training if required; and
- Discuss the allocated year group(s) the PLaN member will work with.

Note: The PLaN member should be placed to work with students who are the relevant age/year group that align with their current course of study. For example; A PLaN member enrolled in a Secondary course should be placed in year 7 to year 12 groups.

What is my commitment to PLaN?

PLaN members need to be available for a dedicated time-slot each week for a full school term. This involves a minimum of one hour per week commitment at the school/centre. You may undertake multiple school terms of PLaN service.

What prior experience do I need to have?

You can join PLaN at any year level stage of your initial teacher education degree whilst at ECU.

Do I have to be enrolled in an ECU teacher education course to participate?

Yes. You must be enrolled at ECU in either a Bachelor of Education or Master of Teaching course.

What clearances do I need to have to participate?

This program is open to all Pre-Service Teachers with current WWCC and NCCHC clearances.

Note: If you have had a break in study of 6 months or more you must reapply for a new NCCHC clearance.

Who designs the PLaN programs?

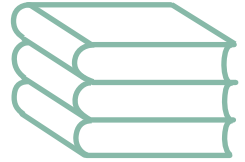
The site you are partnered with will determine:

- The literacy or numeracy (PLaN) program;
- The individual or student groups that you will support (normally 2-3 students); and
- The timing of the PLaN programs.

Do I need to design or prepare the teaching and learning programs, lessons and resources?

No. PLaN members are not expected to design programs. It is the PLaN partner school/centre and classroom teacher's responsibility to:

- Determine, design and plan the literacy or numeracy program and classroom activities;
- Organise and prepare classroom lessons and activities;
- Create and prepare required teaching and learning resources for the lessons including all materials, worksheets etc;
- The student groups that the PLaN member can support; and
- The timing of the PLaN programs / lessons.



Who should I work with during my PLaN service?

Whilst the classroom teacher selects the individual or group of 2-3 students who will partner with the PLaN member, the PLaN member should be placed to work with students who are the relevant age/year group that align with their current course of study. For example; A PLaN member enrolled in an Early Childhood Studies course should be placed in year groups aged zero-eight years old.

Note: You may choose to work with older or younger year groups if negotiated with your PLaN Coordinator.

Will I be formally assessed for PLaN?

No.

How do I find out which school I will be working with?

The ECU PLaN team will contact you by email to connect you with a school/centre that matches your locality and availability. Your details will be stored in a database until such time a suitable school becomes available, so please keep an eye on your ECU email account.

Should I contact my PLaN school/centre prior to commencing?

Yes. Once you have been e-introduced to your PLaN site coordinator it is vital that you contact them via email and phone to organise a face-to-face meeting prior to starting your PLaN in-service.

Can I choose which school I will be placed in?

No. The PLaN team will place you in a suitable partner school as close as possible to where you live.

Can I do my Professional Experience in the same school?

This may be possible. Please inform the PLaN team and we will endeavour to provide such a placement.

I want to participate in PLaN – what's next?

Email the PLaN team at: plan@ecu.edu.au



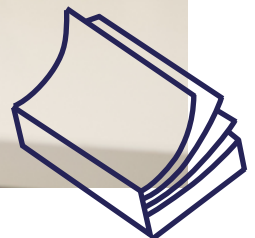
Scan the QR
code to sign up
and become a
PLaN member



PLaN Charter

Upon joining the PLaN program both student members and PLaN school coordinators are provided with a copy of the PLaN charter.

This charter sets out the responsibilities of PLaN student members in maintaining a high standard of professional conduct in all their interactions whilst engaging with PLaN school/centre coordinators, supervising teachers, other school/centre personnel, parents, members of the school/centre community and the classroom students whom they are partnered with.



PLaN Charter

Whilst engaging in PLaN service learning you have responsibility for maintaining a high standard of professional conduct in all of your interactions with PLaN school/centre site coordinators, supervising teachers, other school/centre personnel, parents, members of the school/centre community and the students.

PLaN partners are to ensure at all times to:

- Abide by ECU's values of Integrity, Respect, Rational Inquiry and Personal Excellence
- Adopt an approachable, pleasant and respectful demeanour towards students, staff, and parent/caregivers at the PLaN school/centre
- Adopt professional attire
- Meet school/centre agreed PLaN attendance and time requirements and expectations
- Display awareness of professional teaching standards and are familiar with compliance requirements such as Working with Children Check (WWCC), Nationally Coordinated Criminal History Check (NCCHC) and Occupational Health & Safety (OHS) policies
- Promptly notify or refer confidential issues relating to the PLaN students to which you have been assigned, to the PLaN site coordinator
- Respect and maintain the confidentiality of students, colleagues, and parents/carers relating to the assigned PLaN school/centre

The PLaN Charter relates to the AITSL Domain of Professional Engagement (<https://www.aitsl.edu.au/teach/standards>), specifically standards:

7.1 Meet professional ethics and responsibilities

Understand and apply the key principles described in codes of ethics and conduct for the teaching profession.

7.2 Comply with legislative, administrative and organisational requirements

Understand the relevant legislative, administrative and organisational policies and processes required for teachers according to school stage

This charter is also aligned to ECU's Student Code of Conduct and ECU's Student Charter



School of
Education





“Amazing professional experience,
I loved being out in the classroom
and my mentor teacher is fantastic”

PLaN Pre-Service Teacher



“The PLaN students showed initiative in the classroom and were always willing to help out in any way needed by the classroom teacher”

PLaN School Coordinator

“The PLaN program gave me the opportunity to interact with students and staff at the school in new ways.

I was able to make meaningful connections and develop my practical skills in a less intense environment like the practicums.”

**Lily, Bachelor of Education
(Secondary)**

“The program is incredibly useful in growing your confidence as a teacher. Learning practical experience without being marked is absolutely the thing every Pre-Service Teacher needs... You get to work with the kids and be placed in real classrooms to help out, seeing a range of levels and behaviours of students and the teaching cultures implemented in different classes.”

**Daniel, Bachelor of Education
(Secondary)**

Testimonials

“The plan program offers Pre-Service Teachers with an opportunity to gain experience and teaching techniques through observation without the high standard of being assessed and to help with personal growth and development”

**Amanda, Bachelor of Education
(Primary)**

“The program allowed me to feel more confident going into my first school professional experience as I was able to run small group activities for various ability level children”

**Brittany, Bachelor of Education
(Early Childhood)**

Connect with the School of Education

School of Education
Edith Cowan University
2 Bradford Street
Mount Lawley WA 6050
Australia

Email: plan@ecu.edu.au
Visit our Website:



“This was a great first teaching experience for me, the mentor teacher I was placed with was amazing and this whole program is such a great opportunity to learn... I would definitely recommend the PLaN program as a first experience for studying teachers because of the small groups that you work in”

**Taylen, Bachelor of Education
(Secondary)**